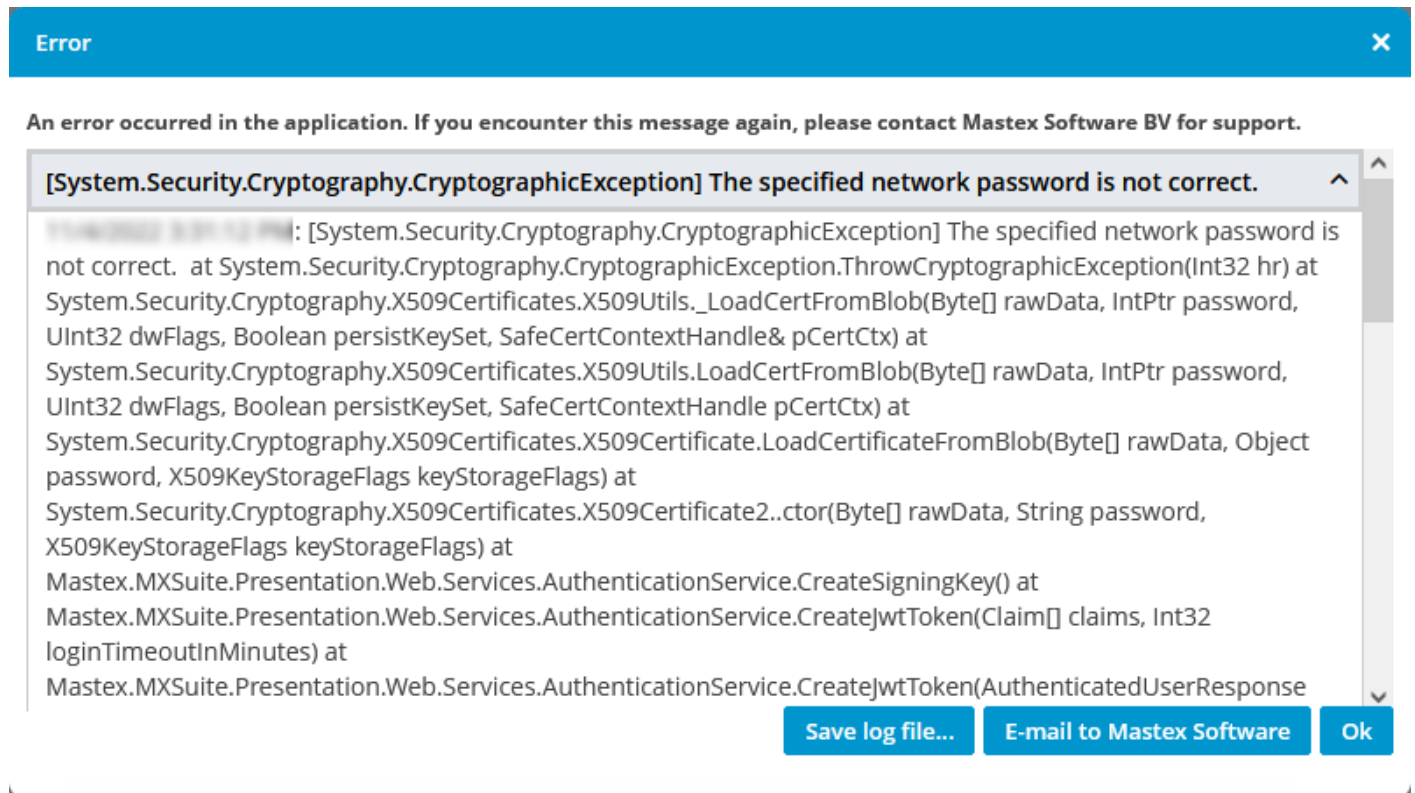


# The specified network password is not correct.

When login to MXSuite the following error message appear :

[System.Security.Cryptography.CryptographicException] The specified network password is not correct.



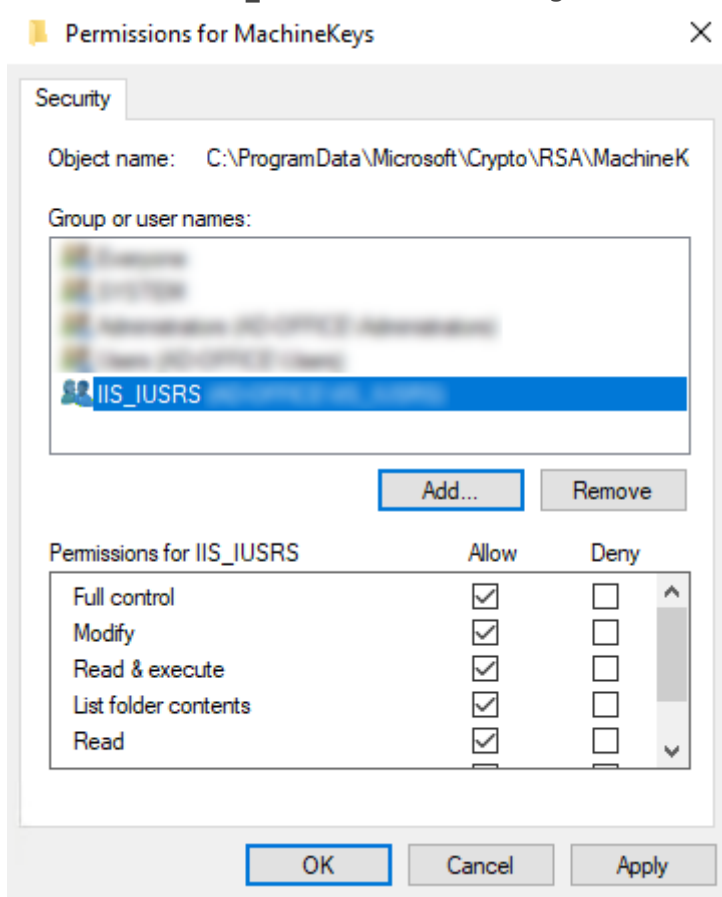
## Solution

- Go to folder C:\ProgramData\Microsoft\Crypto\RSA\
- Right mouse click on the folder MachineKeys and choose **Properties**
- Go to the tab **Security** and click **Edit**
- Check if **IIS\_IUSRS** has Full control permission

*In case you don't see the user IIS\_IUSRS, please follow the steps below:*

- Click **Add** and search for user: **IIS\_IUSRS** and click on **OK**

- Give the user **IIS\_IUSRS** Full control rights on the folder MachineKeys



- Click **OK** and **OK**

Revision #2

Created 2026-03-31 11:13:14 UTC by André Derksen

Updated 2026-03-31 11:55:33 UTC by Theo Vlot